

“Creative manipulation of light can elicit stunning images from a modest consumer camcorder, while poor lighting will cripple the most expensive, state-of-the-art broadcast camera”

Michael Grotticelli

Intensity - control of light (quantity)

✍ Is measured in foot-candles (candela) in the United States, or in lux in most other countries.



sunlight on an average day ranges from 32,000 to 100,000 lux

TV studios are lit at about 1,000 lux

a bright office has about 400 lux

moonlight represents about 1 lux

starlight measures a mere 0.00005 lux



Light meters

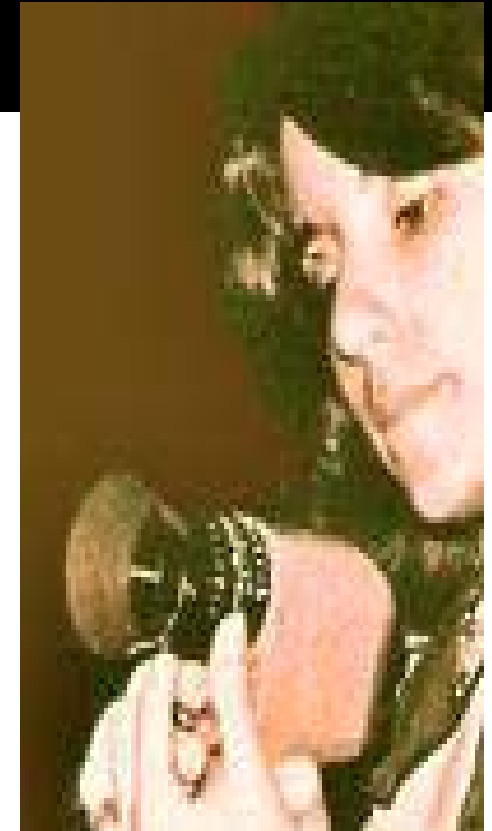
 Light meters are used to measure light





Reflected Light Meters

Measures the amount of light being reflected from (off of) subject matter





Incident Light Meters

- Determines how bright the light is

To get an accurate reading in the studio with this type of meter you must point it directly at the light you are measuring while standing in the position of the talent



Colour Temperature Meters

✍ provide a readout of the dominant colour





Controlling light intensity

- **Intensity Control Through Varying**



5 feet = 800 fc

10 feet = 200 fc

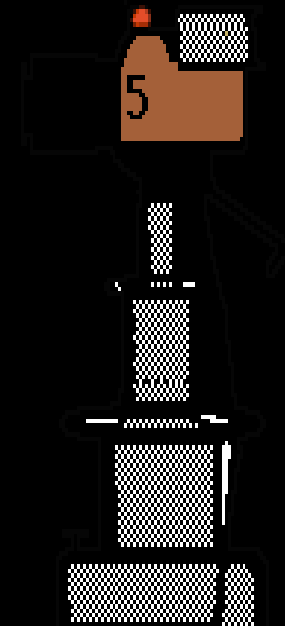
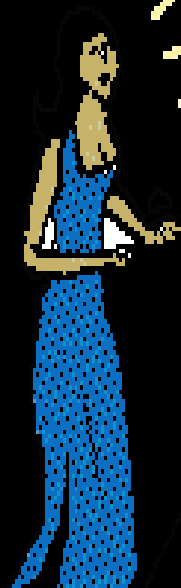
20 feet = 50 fc



1.5 meters = 8800 lux

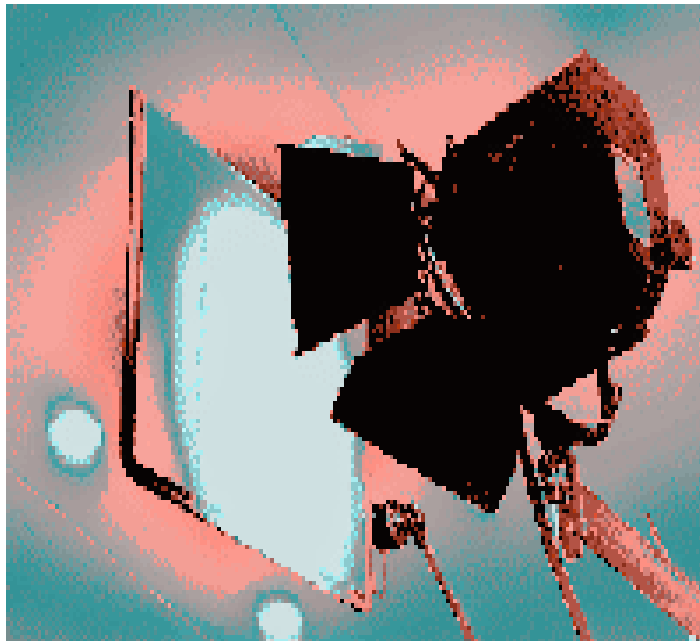
3 meters = 2150 lux

6 meters = 536 lux



2. Scrims

- ✓ Often seen in studios
- ✓ Resemble a frame of finely





3. Dimmers



