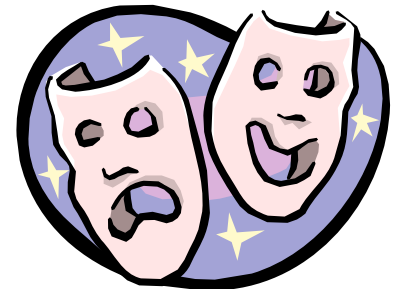


Week 6 & 7

Measure of Central Tendencies

Learning outcomes:

- Estimate median and quartiles graphically by using ogive.
- Estimate mode graphically by using histogram.



Median and quartiles

- Median is the data with the position $\left(\frac{N+1}{2}\right)^{th}$
- 1st quartile is the data with the position $\left(\frac{N+1}{4}\right)^{th}$
- 3rd quartile is the data with the position $\frac{3}{4}(N+1)^{th}$

